



THE PEOPLE POWER BEHIND YOUR SUCESS

With a large and growing regional labor pool, a lower cost of living, and access to a stable workforce, the Inland Empire North offers favorable conditions for warehouse and logistics employers seeking long-term operational stability. Victor Valley College, located in nearby Victorville, serves the region with thousands of students annually and provides workforce development programs that support logistics, manufacturing, and skilled trades.

The presence of local training programs and an expanding population base provides employers the ability to recruit, train, and retain a reliable workforce within the Inland Empire North.

 WAREHOUSE WORKERS AVERAGE EARNINGS (HOURLY) \$19.98			
DRIVE TIME	2020 - 2025 INCREASE RES. WORKERS	2025 RESIDENT WORKERS	2025 NET COMMUTERS
30 Min	10%	4,763	-2,724
45 Min	8%	9,271	-5,802

 FORKLIFT DRIVERS AVERAGE EARNINGS (HOURLY) \$21.88			
DRIVE TIME	2020 - 2025 INCREASE RES. WORKERS	2025 RESIDENT WORKERS	2025 NET COMMUTERS
30 Min	19%	873	-620
45 Min	17%	1,649	-1,251

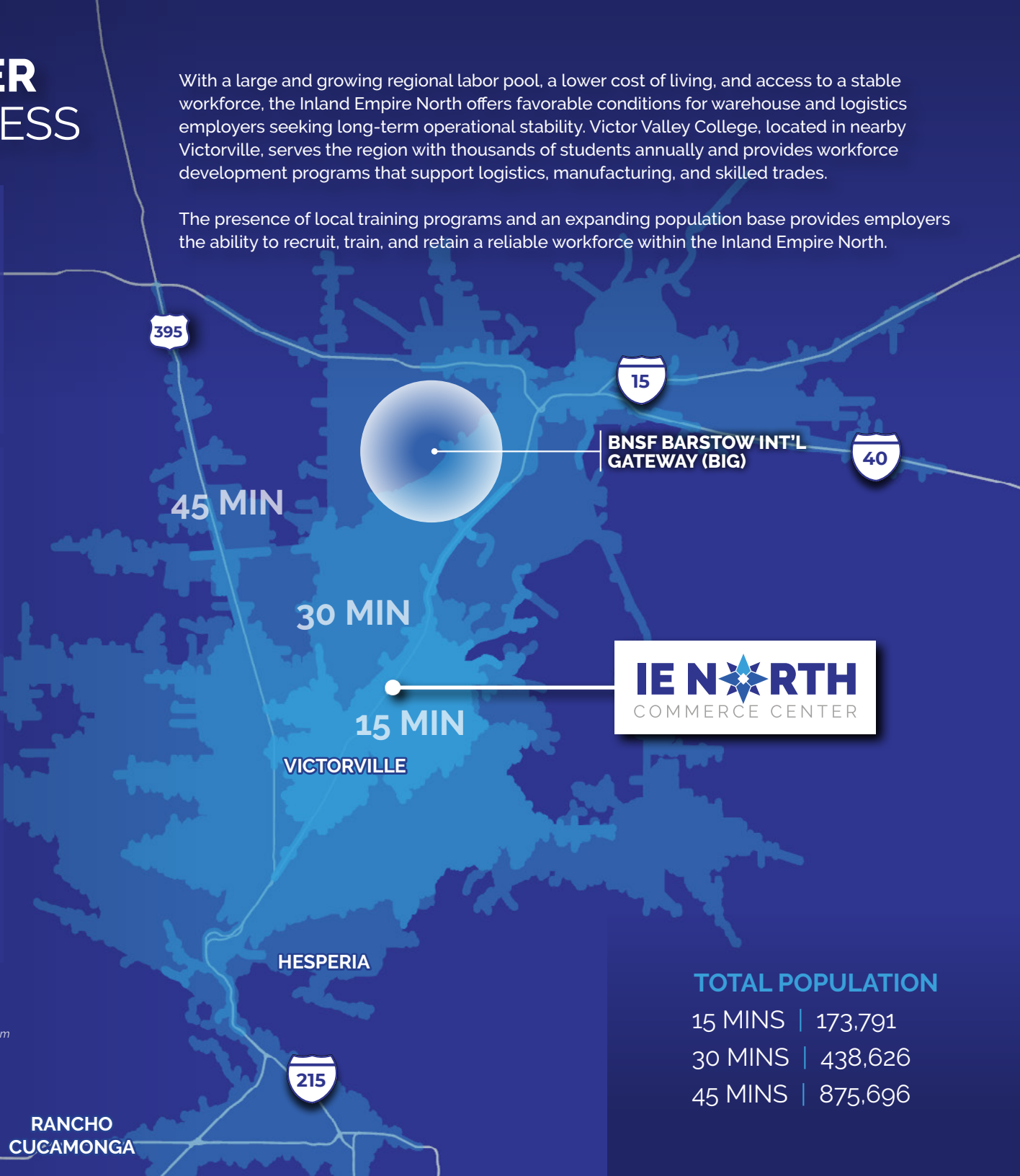
 MANUFACTURERS + ASSEMBLERS AVERAGE EARNINGS (HOURLY) \$20.01			
DRIVE TIME	2020 - 2025 INCREASE RES. WORKERS	2025 RESIDENT WORKERS	2025 NET COMMUTERS
30 Min	-2%	545	-318
45 Min	-2%	1,041	-679

* 2025 Net Commuters (negative = more outbound)

Labor Facts are calculated using a 30/45-min Drive Time from the site

Resident Workers, Resident Workers Change, and Net Commuters data comes from Lightcast (Latest data release: 01/01/2026)

Wage data comes from ERI (Latest data release: 02/16/2026)



BNSF BARSTOW INT'L GATEWAY (BIG)



TOTAL POPULATION

- 15 MINS | 173,791
- 30 MINS | 438,626
- 45 MINS | 875,696